



MONTHLY MEMBERSHIP PROGRESS REPORT

District 3234D2

Results as of: 12/31/2017

GMT: JAYESH THAKKAR

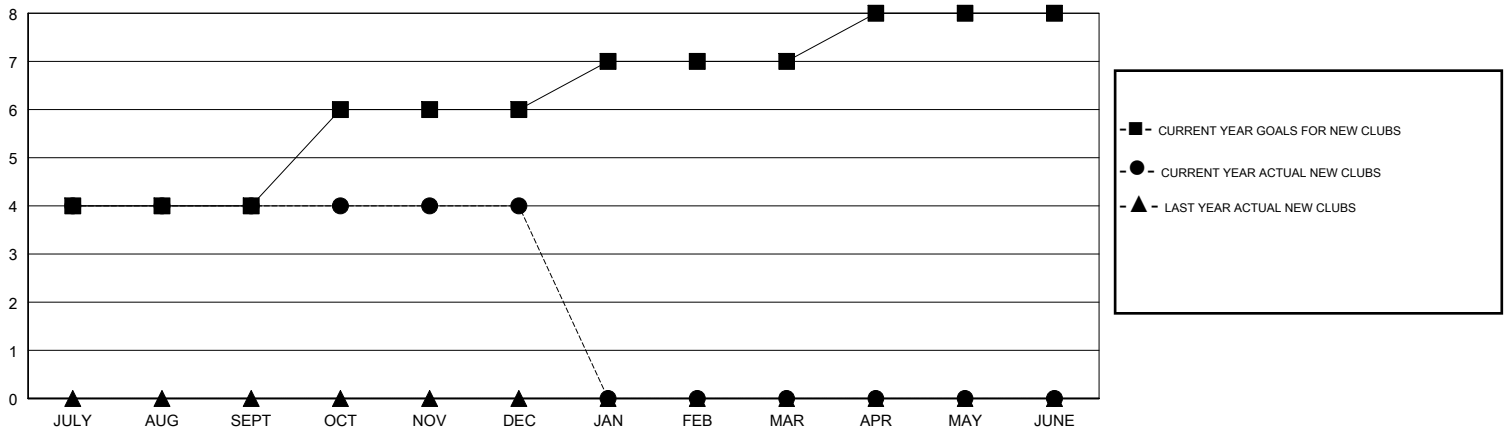
LOCATION INDIA

GMT CA

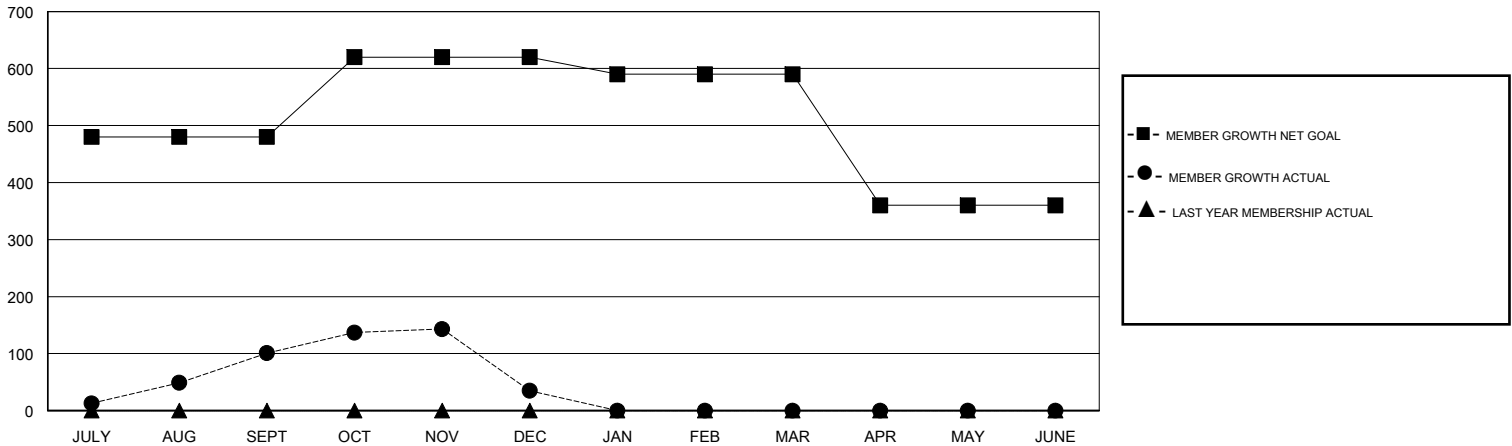
Clubs			
RESULTS FOR 2017-2018			
QUARTER	NEW CLUB GOAL	NEW CLUBS	DROPPED CLUBS
JULY/AUG/SEPT	4	4	1
OCT/NOV/DEC	2	0	6
JAN/FEB/MAR	1	0	0
APR/MAY/JUNE	1	0	0

Members			
RESULTS FOR 2017-2018			
QUARTER	MEMBER GROWTH NET GOAL	MEMBER GROWTH ACTUAL	DROPPED MEMBERS ACTUAL (including transfers)
JULY/AUG/SEPT	480	331	207
OCT/NOV/DEC	140	181	243
JAN/FEB/MAR	-30	0	0
APR/MAY/JUNE	-230	0	0

GOALS AND ACTUAL NEW CLUBS CUMULATIVE



GOALS AND ACTUAL MEMBERS CUMULATIVE



DROPPED CLUBS: 7

49 CLUBS OF 135 ADDED 1 OR MORE NEW MEMBERS

GENDER DISTRIBUTION

MALE 3,288 (59.67%)
 FEMALE 2,222 (40.33%)
 Women Percentage Fiscal Year Goal: 40%

DROPPED MEMBERS

[CLICK HERE FOR CUMULATIVE MEMBERSHIP DATA](#)

DECEASED	2
CLUB CANCELLED	148
OTHER	300
TOTAL	450

TOTAL FAMILY UNIT MEMBERS	3,430
FAMILY MEMBERS PAYING HALF DUES	1,790